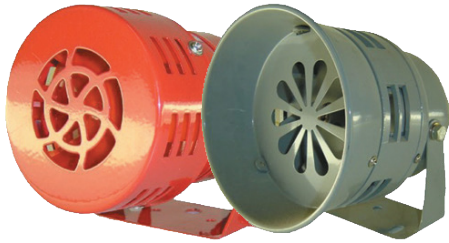
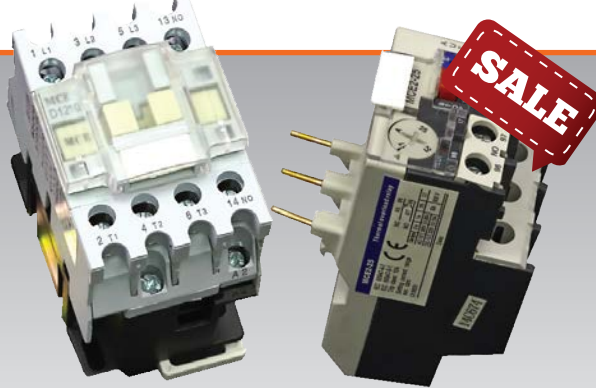


ALL PRICES INCLUDE VAT



AUDIBLE WARNING BUZZER SIRENS

- BJ-1, dB Rating @ 1m: 80dB **R104.00**
- BJ-2, dB Rating @ 1m: 90dB **R115.00**
- MS-190, dB Rating @ 1m: 100dB **R230.00**
- MS-290, dB Rating @ 1m: 115dB **R348.00**



CONTACTORS AND OVERLOADS

3 Pole Contactors

- AC Magnetic, NO or NC Auxillary, **MCE-D0910 to MCE-D1801**
- AC Magnetic, 1 NO or 1 NC Auxillary, **MCE-D2510 to MCE-D3801**
- AC Magnetic, 1 NO or 1 NC Auxillary, **MCE-D4011 to MCE-D9511**
- AC Magnetic, 1 NO or 1 NC Auxillary, **MCE-F115 to MCE-F800**

**Small Frame-suitable for
MCE-D09-D32 Contactors**
From MCE2-130,25 to MCE2-D1332,0
FROM R172.00

**Medium Frame-suitable for
MCE-D25-D38 Contactors**
From MCE2-D2332,0
R249.00

**Large Frame-suitable for
MCE-D40-D95 Contactors**
From MCE2-D3332,0 to MCE2-D43393,0
FROM R462.00

FROM R140.00
FROM R326.00
FROM R583.00
FROM R1999.00



MOULDED CASE CIRCUIT BREAKERS

Mixed Load • 3 Pole • 25kA, 35kA, 65kA & 85kA

- KCM1-225S-125 to KCM1-225S-250 **R1299.00**
- KCM1-400S-315 to KCM1-400S-400 **R3450.00**
- KCM1-630S-500 to KCM1-630S-630 **R6199.00**

MILD STEEL ENCLOSURES

UV Powder Coated,
Complete with
chassis plate, panel
key and mounting
brackets



IP56

- MCE-102, 300x250x150, Orange/Grey **R639.00**
- MCE-111, 500x400x250, Orange/Grey **R1599.00**
- MCE-122, 800x600x250, Orange/Grey **R2899.00**

ENCLOSED ISOLATORS AND CHANGE OVERS



3 Pole, enclosed in mild steel enclosure

- QA3-160-SM, 160A, 500x400x250 **R3489.00**
- QA3-200-SM, 200A, 500x400x250 **R3000.00**
- QA3-630-SM, 630A, 600x500x250 **R5350.00**

4 Pole, enclosed in mild steel enclosure

- QA4-125-SM, 125A, 500x400x250 **R3599.00**
- QA4-160-SM, 160A, 500x400x250 **R3750.00**
- QA4-400-SM, 400A, 600x500x250 **R5700.00**
- QA4-800-SM, 800A, 1200x800x350 **R13280.00**



R215.00

HOT PRICE

ME8111



R49.00

HOT PRICE

MJ2-1308



R12.99

HOT PRICE

V-15-1C25

SEALED LIMIT SWITCHES
FROM ME8111 TO ME8169
28mm Limit Switches - 10A @ 250VAC - IP65

MICRO SWITCHES
FROM MJ2-1300 TO MJ2-1705
15A RATED

MINI MICRO SWITCHES
FROM V-15-1C25 TO V-156-1C25
15A RATED

WE HAVE AN EXTENSIVE RANGE OF ELECTRICAL PRODUCTS • OPEN AN ACCOUNT TODAY

ALL PRICES INCLUDE VAT



WELDING PLUGS AND SOCKETS

IP44

- OS015, 16A - 5pin 415V **R69.00**

IP67

- OS0351, 63A - 5pin 415V **R369.00**
- OS0441, 125A - 4pin 415V **R949.00**

ONYX SWITCHED SOCKET WITH INTERLOCK

- 635067, IP67, 63A - 3pin 230V **R1495.00**

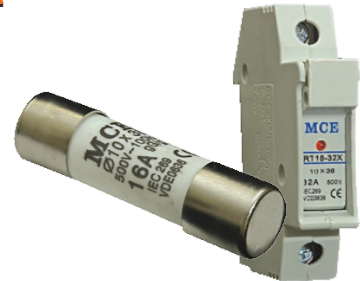


RELAYS

Plugin relay - available in AC or DC

Voltages:
12, 24, 48, 110 & 230VAC
12, 24, 48 & 110VDC

- JQX-10F-2, 2C/over 8pin, 10Amps **R79.00**
- JQX-10F-2, 3C/over 11pin, 10Amps **R89.00**



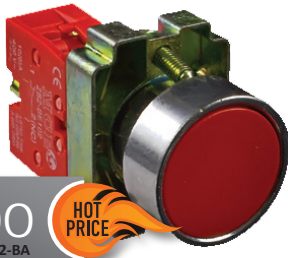
CERAMIC FUSES AND FUSE HOLDERS

Fuse Holders

- RT18-32-1, Din-Mount + LED indication, 1 Pole, 10x 38mm **R29.00**

Fuses

- F1038, Available in 1, 2, 4, 6, 10, 16, 20, 25 & 32Amp **R5.99**



R74.00
XB2-BA

HOT PRICE

22MM STEEL CONTROL DEVICES

Available in:



XB2-BA, Flathead pushbutton 1NO or NC



DIN RAIL CIRCUIT BREAKERS

- KC3-101 to KC3-163, 1 Pole, 3kA **R28.00**
- KC3-201 to KC3-263, 2Pole, 3kA **R117.00**
- KC3-301 to KC3-363, 3Pole, 3kA **R179.00**
- KC3-401 to KC3-463, 4Pole, 3kA **R239.00**

304 STAINLESS STEEL ENCLOSURE

COMPLETE WITH CHASSIS PLATE AND STEEL PANEL KEY

- 1.6mm Steel Thickness
- Complete with accessories and protective wrapping to prevent scratches
- KEMA approved



All enclosures come with a protective wrapping that prevent scratches

- MCE-102-SS, 300x250x150 **R1699.00**
- MCE-111-SS, 500x400x250 **R4699.00**



R229.00
LTE-3072

HOT PRICE

STROBE LIGHTS

- Colours: Red, Green, Blue, Yellow
- Dimensions: 75mm ø 80mm in height
- Voltages available: 12VDC, 24VAC, 110VAC & 230VAC

DIN RAIL & MINI RAIL SURGE ARRESTORS

1 Pole Surge Arrestor

- BY15-10/1-275, 10kA **R299.00**
- BY7-10/1-275, 10kA **R269.00**



VOLT AND AM METERS

- Moving Iron or Shunt Connected Moving Coil
- Standard over scale 100%

- AMI-72-A, 5, 10, 15, 20, 30, 40, 50 Amp **R139.00**
- AMI-72-V, AC Volt Meter **R149.00**

WE HAVE AN EXTENSIVE RANGE OF ELECTRICAL PRODUCTS • OPEN AN ACCOUNT TODAY